

5311 West Congress

PAGE TABLE

PAGE	DESCRIPTION	COMMENTS
1	OVERVIEW	FRONT PAGE
2	LAYOUT AND SETBACKS	FOR CITY PLANNING AND DELOPMENT
3	SUB-LOT DIVISION	SUB-LOT DIVISION
4	INCOMING POWER (SLEMCO)	CONDUIT PLACEMENT FOR SLEMCO
5	BUILDING POWER	POWER FROM PEDESTAL TO HOME, AC, SEWAGE
6	SEWAGE PLAN	
7	WATER PLAN	INCOMING WATER LINES FROM LWDS
8	EXCAVATION / DRIVEWAY	LAY GRAVEL DRIVEWAY FOR MAIN HOME.
9	POWER POLE	POWER PEDISTAL SPECIFICATIONS
10	GE MAIN PANEL	SPEC SHEET FOR PANEL
11	RELOCATE UTILITIES	
12	HOME TRIM OUT	TRIM OUT THE INTERIOR SEAM BETWEEN HALVES
13	FOUNDATION	FORM AND POUR FOUNDATION



3D Model <http://5311WestCongress.com>
 Bid Form <http://bid.5311WestCongress.com>
 This Document <http://pdf.5311WestCongress.com>

REVISION TABLE		
Date	Description	Fliped Layout
6/19/2024		

SHEET TITLE:
 Overview

PROJECT DESCRIPTION:
 5311 W. Congress
 5311WestCongress.com

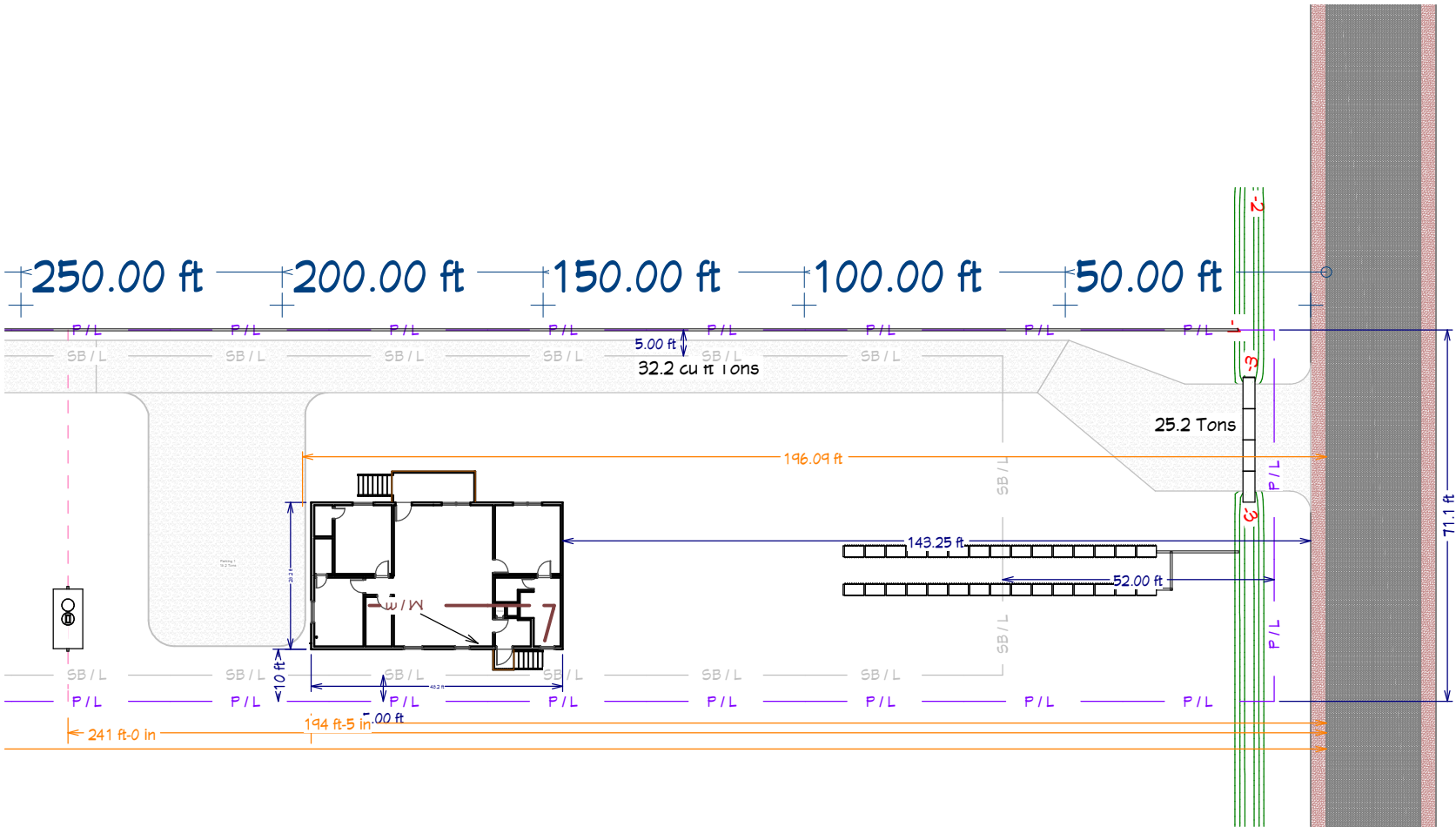
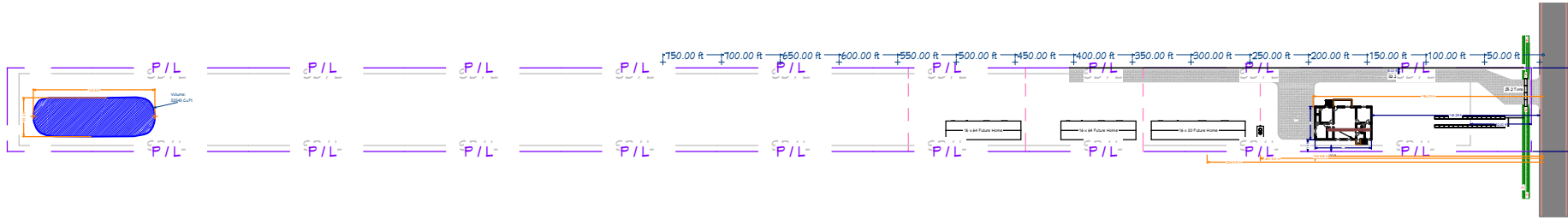
DRAWINGS PROVIDED BY:
 Aztec Home Solutions
 david@AztecHomesolutions.com

DATE:
 4/4/2025

SCALE:

SHEET:
 1

Layout and Setbacks



REVISION	TABLE
Date	Description
6/19/2024	Flipped Layout

SHEET TITLE:
Layout and Setbacks

PROJECT DESCRIPTION:
5311 W. Congress
5311WestCongress.com

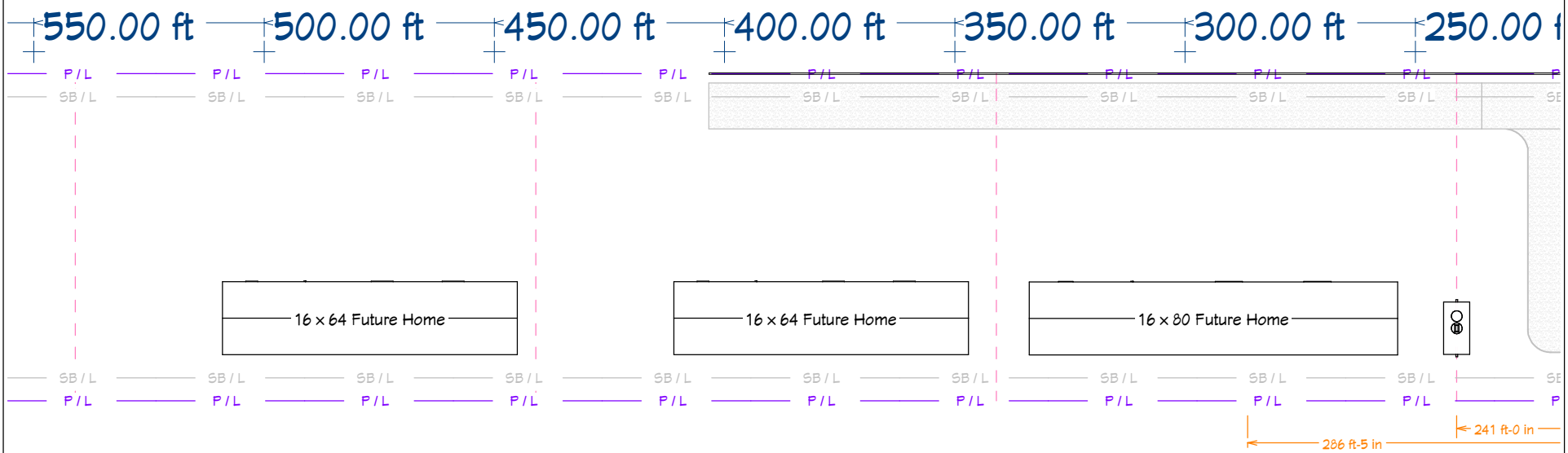
DRAWINGS PROVIDED BY:
Aztec Home Solutions
davit@AztecHomeSolutions.com

DATE:
4/4/2025

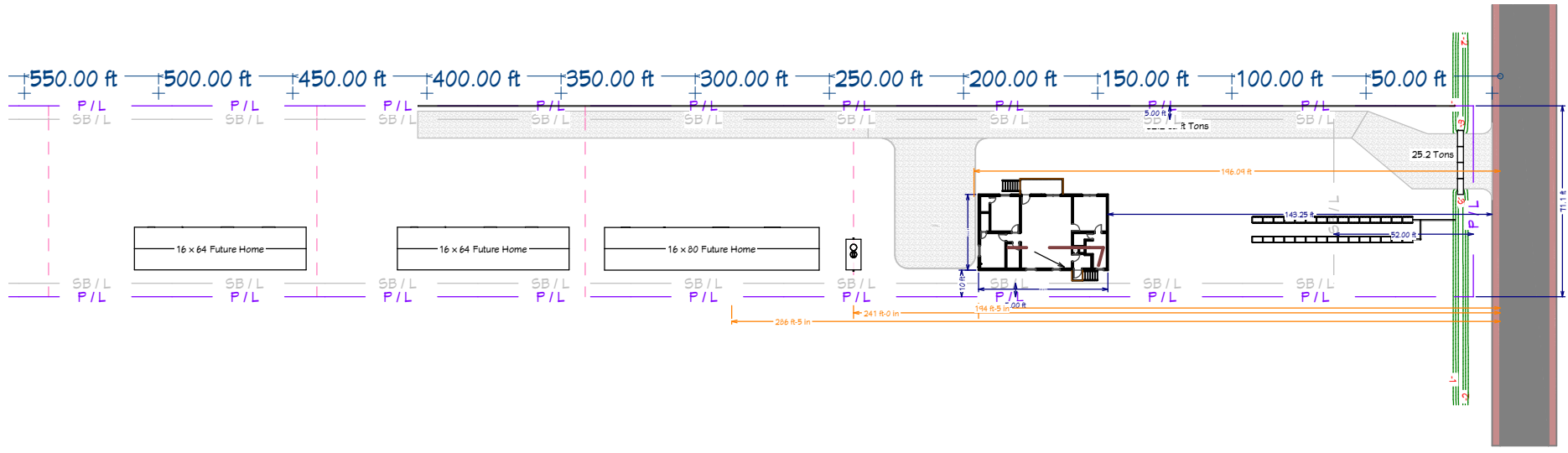
SCALE:

SHEET:

2



Plot Plan View

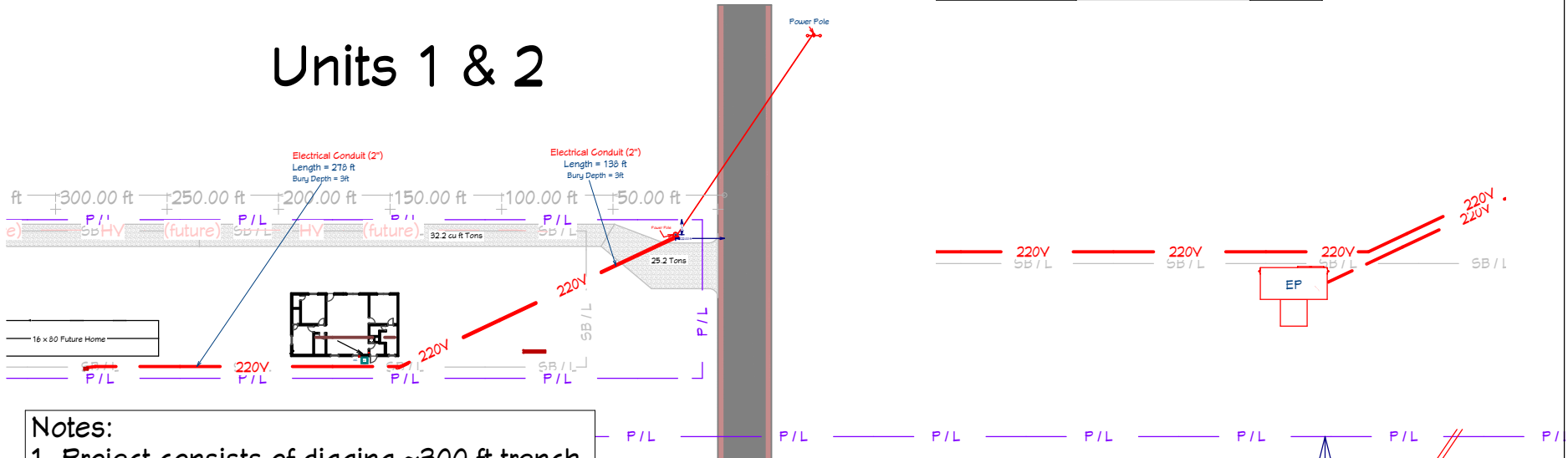


Plot Plan View

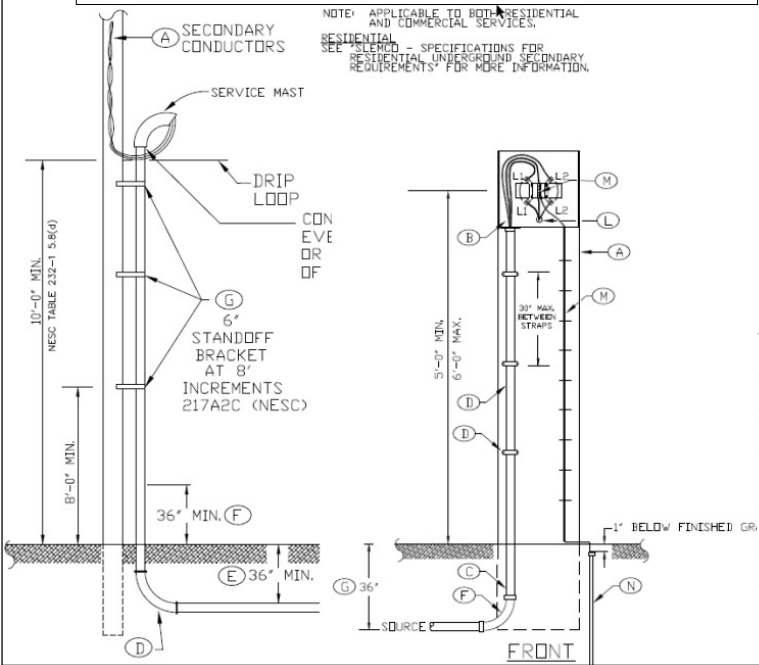
REVISION TABLE	
Date	Description
4/4/2025	
SHEET TITLE: Sub-Lot Division	
PROJECT DESCRIPTION: 5311 W. Congress 5311WestCongress.com	
DRAWINGS PROVIDED BY: Aztec Home Solutions david@AztecHomeSolutions.com	
DATE:	4/4/2025
SCALE:	
SHEET:	3

Incoming Power (Slemco)

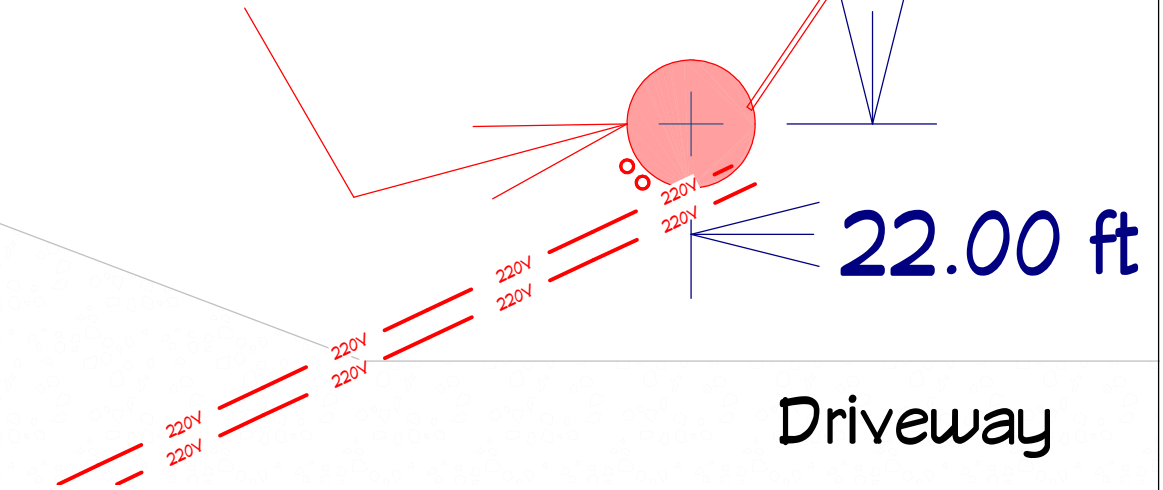
Units 1 & 2



- Notes:**
1. Project consists of digging ~300 ft trench.
 2. Total Conduit: ~450'
 3. Bury 2 (138' & 285') 2" Conduit at 36".



Power Pole



REVISION TABLE	
Date	Description
6/19/2024	Flipped Layout

SHEET TITLE:
Incoming Power (Slemco)

PROJECT DESCRIPTION:
**5311 W. Congress
5311WestCongress.com**

DRAWINGS PROVIDED BY:
**Aztec Home Solutions
david@AztecHomeSolutions.com**

DATE:
4/4/2025

SCALE:

SHEET:
4

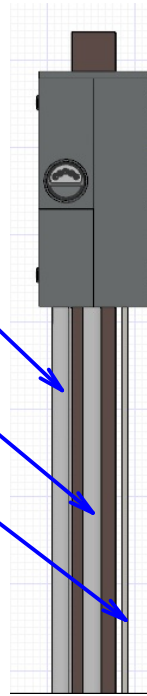
Building Power



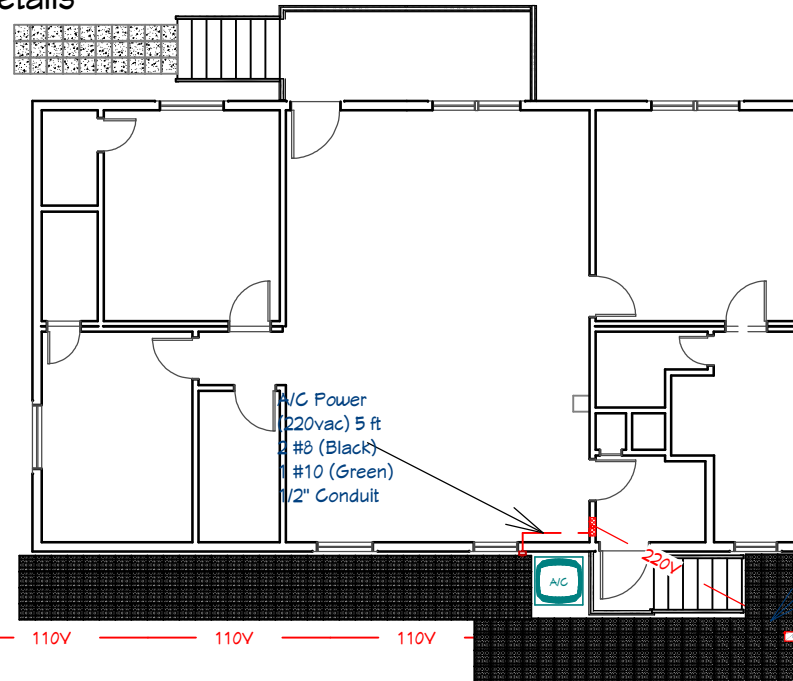
Incoming Power (220V)
2" Conduit

Output to Home (220V)
2" Conduit

Sewer Plant Power (110V)
3/4" Conduit



See Pg 10-11
for details



110v GFCI Receptacle
(in WP Enclosure)

Sewer Plant Power
(110vac 20A) 96 ft

2 #12 (1 Black, 1 White)
1 #12 (Green)
3/4" Conduit @ 18"

110v

110v

110v

110v

110v

110v

110v

110v

110v

110v

REVISION	TABLE
Date	Description
6/19/2024	Flipped Layout
9/24/2024	Updated Power Pedestal

SHEET TITLE:
Building Power

PROJECT DESCRIPTION:
5311 W. Congress
5311WestCongress.com

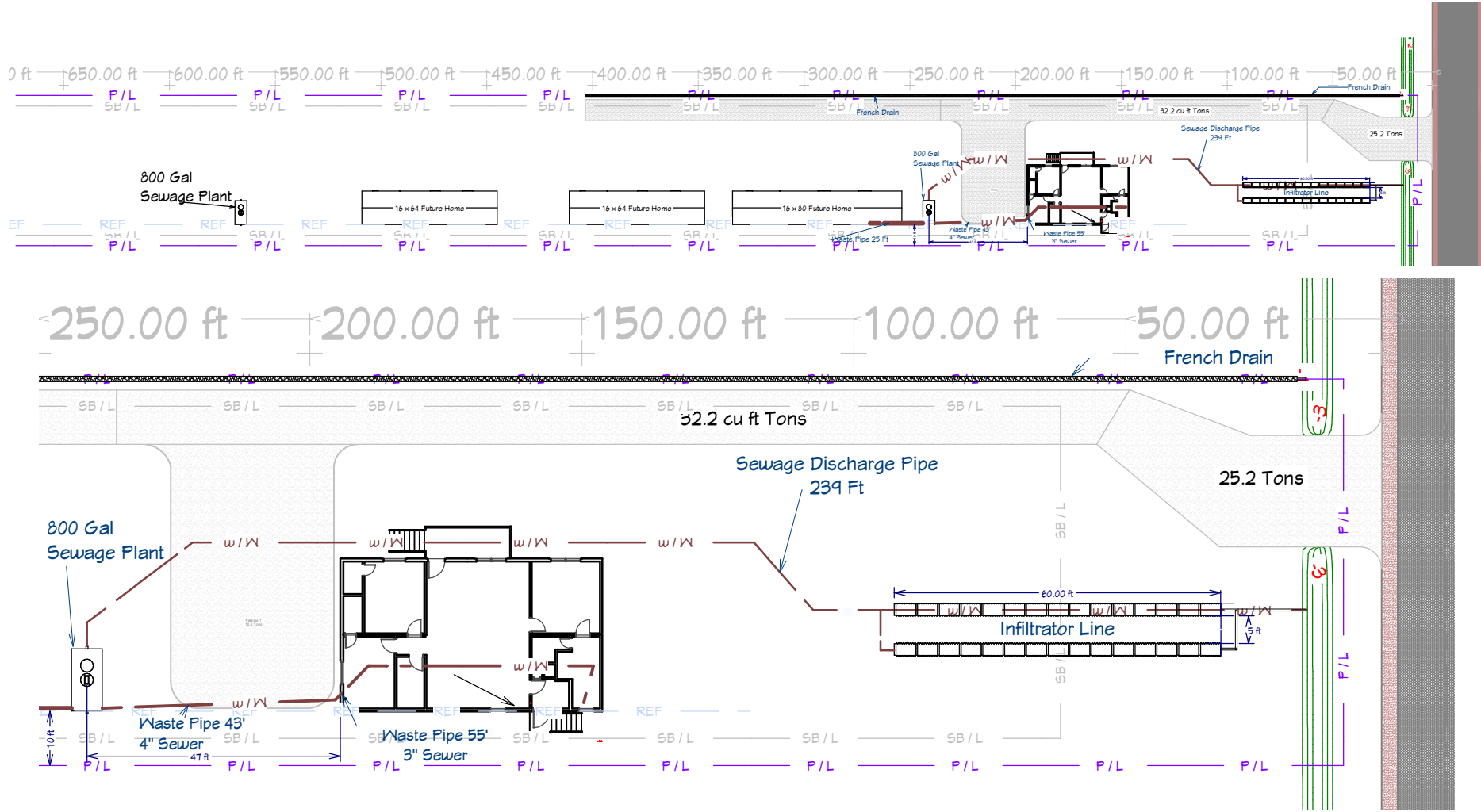
DRAWINGS PROVIDED BY:
Aztec Home Solutions
david@aztechhomesolutions.com

DATE:
4/4/2025

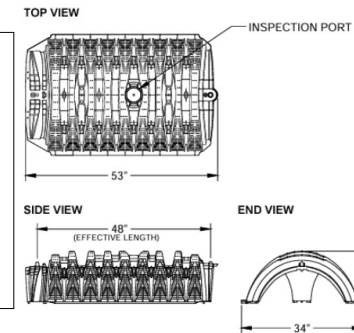
SCALE:

SHEET:

Sewage Plan



Notes:
 The Waste Plant vender will bury the plant and install the discharge line.
 Discharge Line will pass along the front of the home then split into 2 parallel 60' lengths between the home and the street. The output will then go to the drainage ditch along road.
 Waste line will go from the sewer plant to the closest corner of the home, then turn up 90 degrees and transition from 4" to 3". The 20' closest to the home will be schedule 40 (as it will go under the parking area).



Revision Table	Date	Description
1	6/19/2024	Flipped Layout
2	6/21/2024	Added French Drain
3	7/5/2024	Moved Infiltrator Line forward
4	7/15/2024	Moved Infiltrator to front

SHEET TITLE:
Sewage Plan

PROJECT DESCRIPTION:
5311 W. Congress
5311 WestCongress.com

DRAWINGS PROVIDED BY:
Aztec Home Solutions
 david@aztechhomesolutions.com

DATE:
 4/4/2025

SCALE:

SHEET:
6

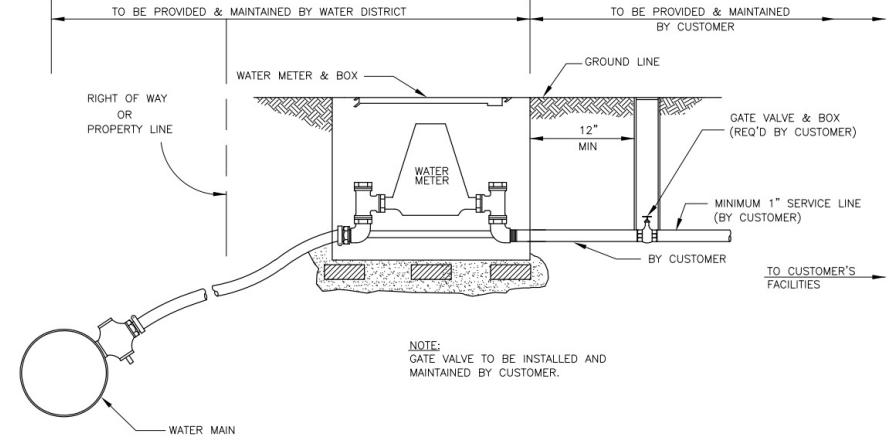
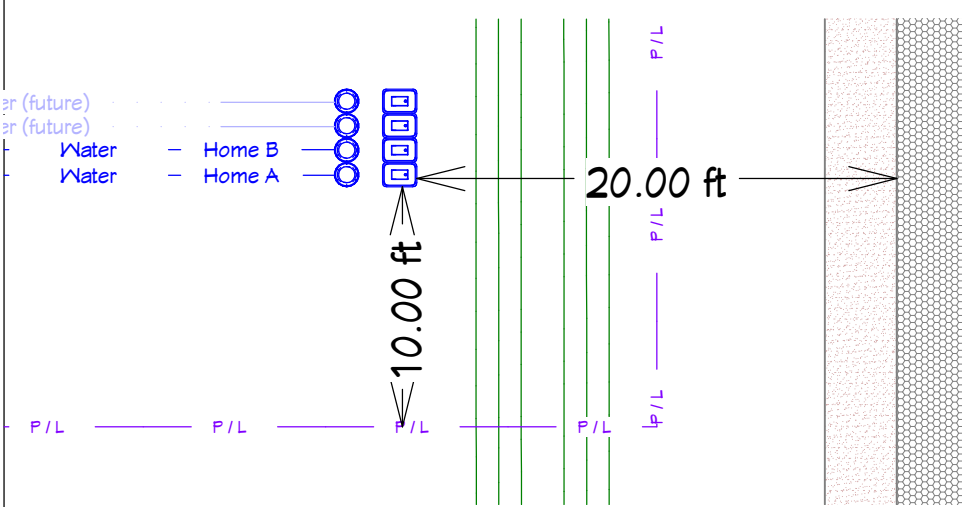
Water Plan

Notes:

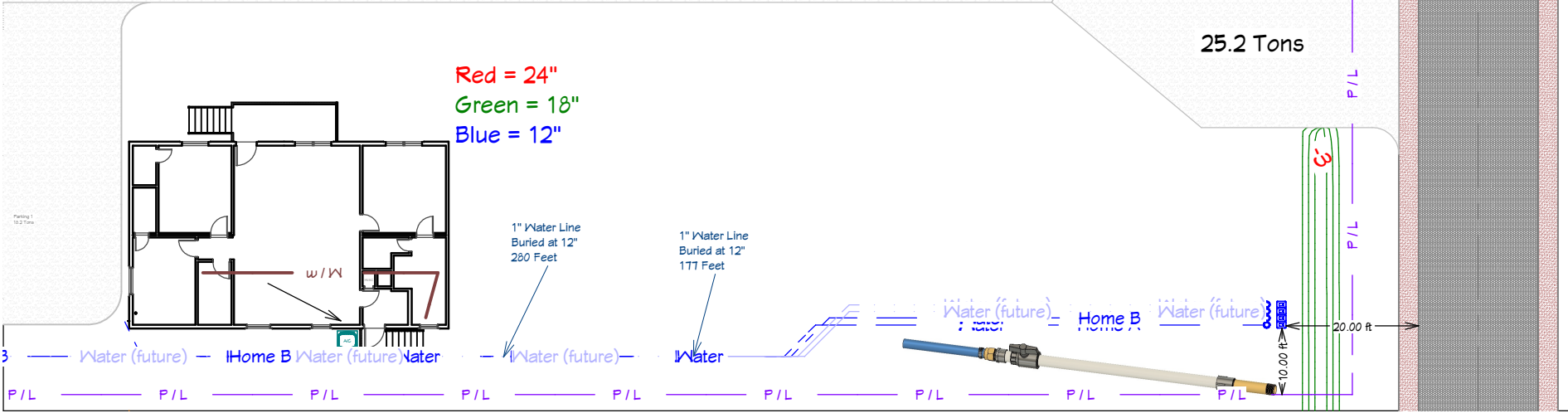
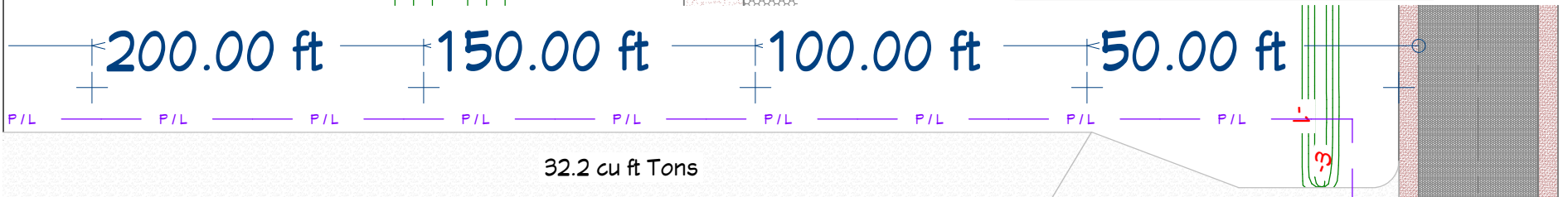
1" PEX (of various colors for later identification).
Bury depth is 12".

The lines for homes 1 and 2 will be completed.

Lines 3 & 4 will be left coiled at surface (after home 2)



TYPICAL WATER SERVICE CONNECTION



REVISION	TABLE
Date	Description
6/19/2024	Flipped Layout
6/21/2024	Adj Meter placement

SHEET TITLE:
Water Plan

PROJECT DESCRIPTION:
**5311 W. Congress
5311WestCongress.com**

DRAWINGS PROVIDED BY:
**Aztec Home Solutions
david@AztecHomesolutions.com**

DATE:
4/4/2025

SCALE:

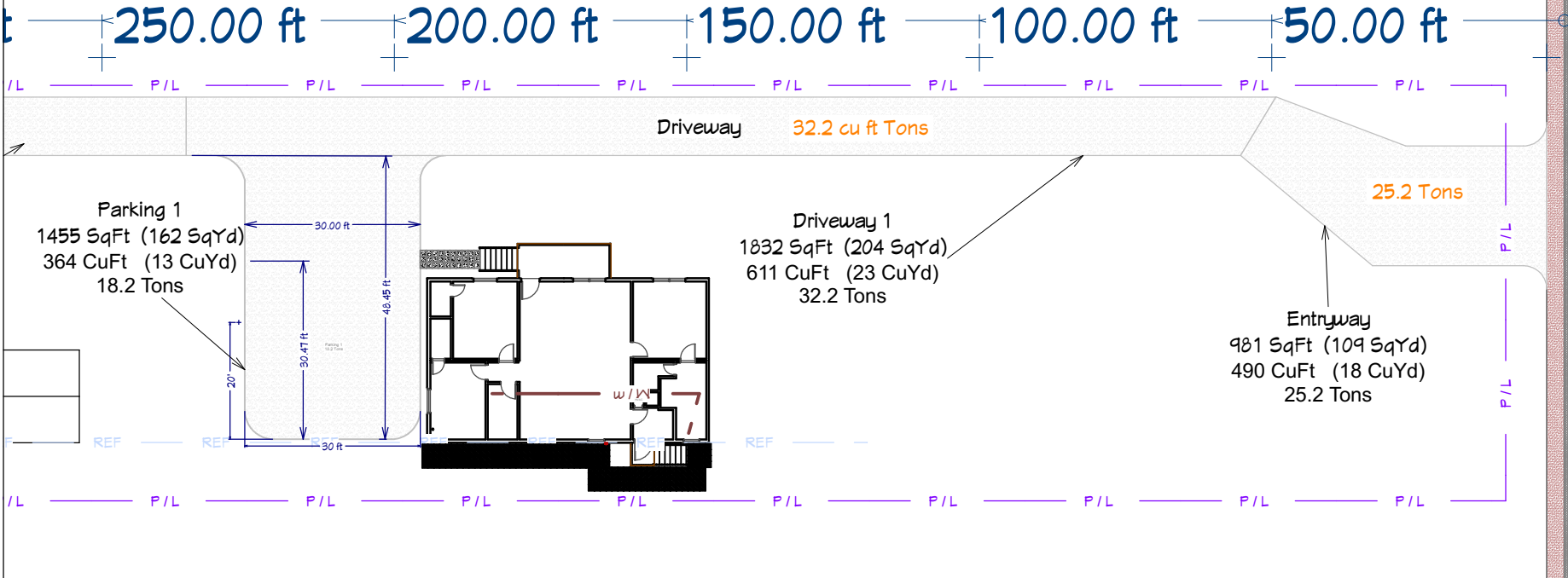
SHEET:
7

Excavation / Driveway

Gravel Notes

Location	Depth	Tons	Comments
Entry	6in	25.2	Depth will be 8in over Culvert
Driveway 1	4in	32.2	
Parking 1	3in	15.4	
Driveway 2	4in	29.4	
Parking 2	3in	9.8	

Total = 107.8 Tons



Notes:
Total Area is 3,200 StFt (rounded)

Revision Table	Date	Description
1	6/19/2024	Flipped Layout
2	9/5/2024	Updated Gravel Depths
3	10/17/2024	Widened Parking Entrance

SHEET TITLE:
Excavation / Driveway

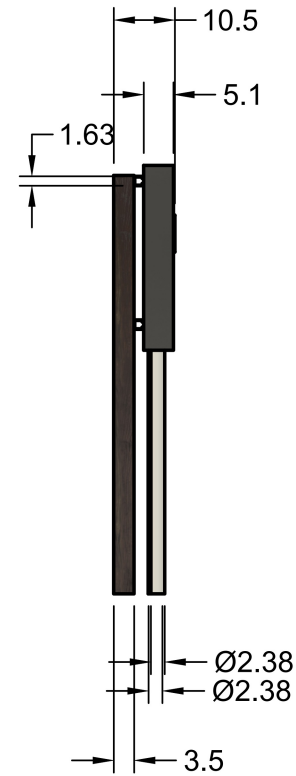
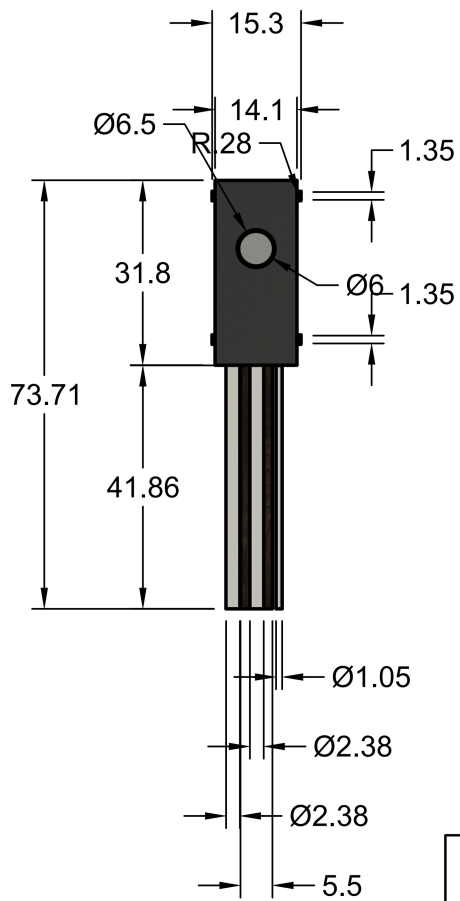
PROJECT DESCRIPTION:
5311 W. Congress
5311WestCongress.com

DRAWINGS PROVIDED BY:
Aztec Home Solutions
david@aztechomesolutions.com

DATE:
4/4/2025

SCALE:

SHEET:
8



		PROJECT General		
		TITLE Power Pole		
APPROVED	SIZE A	CODE	DWG NO	REV
CHECKED				
DRAWN	David VerHage	7/21/2024	SCALE 1:20	WEIGHT
			SHEET 1/1	

Revision Table	Description
Date	

SHEET TITLE:
Power Pole

PROJECT DESCRIPTION:
5311 W. Congress
5311WestCongress.com

DRAWINGS PROVIDED BY:
Aztec Home Solutions
david@AztecHomeSolutions.com

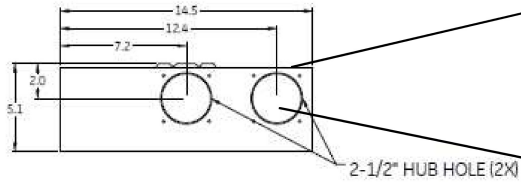
DATE:
4/4/2025

SCALE:

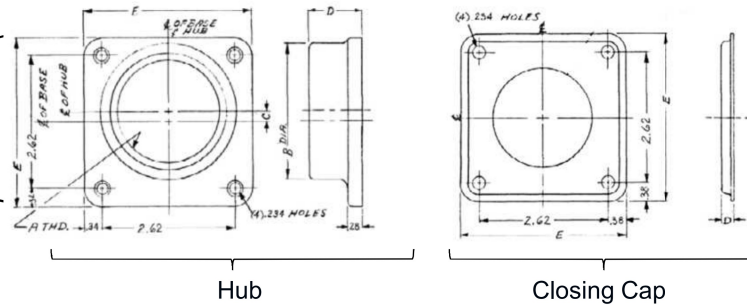
SHEET:

9

Top View



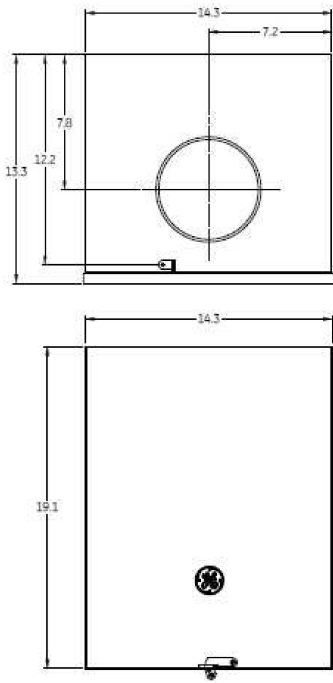
Hub Dimensions



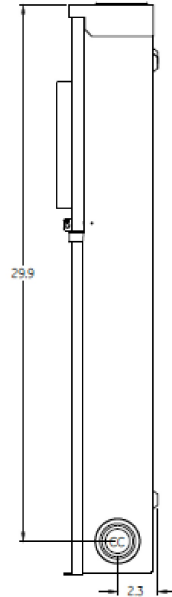
Available Hubs

Cat#	Mod#	A-THD	B-DIA	C	D	E
TC75	2	" $\frac{3}{4}$ - 14"	1.31	0.81	1.03	3.31
TC100	2	"1 - 11 $\frac{1}{2}$ "	1.53	0.69	1.03	3.31
TC125	2	"1 $\frac{1}{4}$ - 11 $\frac{1}{2}$ "	1.88	0.53	1.03	3.31
TC150	2	"1 $\frac{1}{2}$ " - 11 $\frac{1}{2}$ "	2.12	0.42	1.03	3.31
TC200	2	"2 - 11 $\frac{1}{2}$ "	2.62	0.2	1.03	3.31
TC250	2	"2 $\frac{1}{2}$ - 8"	3.19	NONE	1.22	3.31
TC CP Closing Cap	1	NONE	NONE	NONE	0.25	3.38

Front Separated View

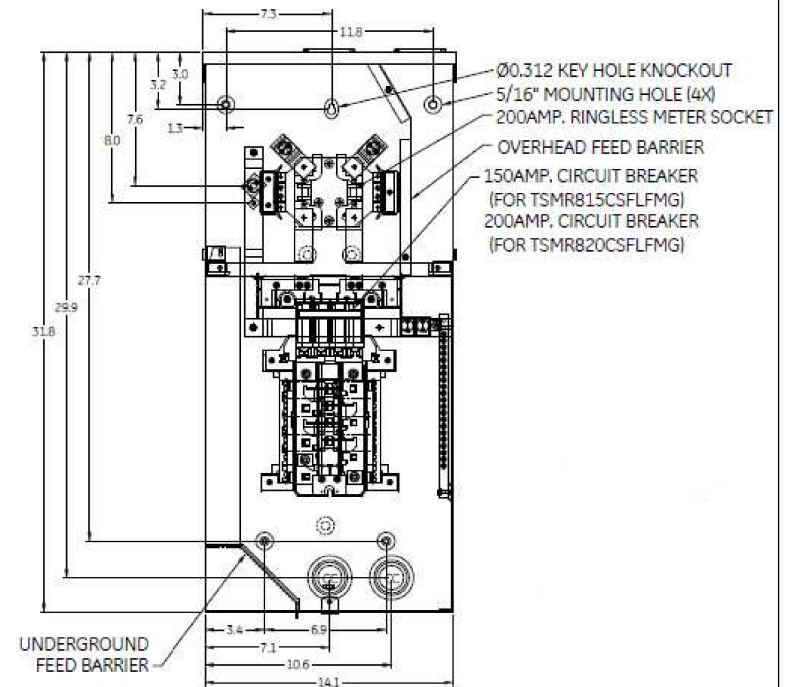


Side View

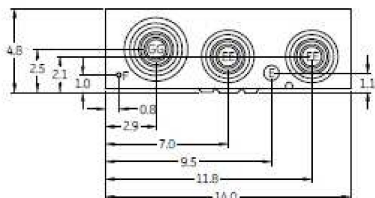


Main Wire Size
(1) #6 – 4/0 CU/AL

Inside View



Bottom View



Note : All Dimensions have ± 0.125 Tolerance

Knockouts

F = 9/32"
E = 1/2"
CC = 1/2", 3/4", 1", 1-1/4", 1-1/2", 2"
EE = 1/2", 3/4", 1", 1-1/4", 1-1/2", 2", 2-1/2"
GG = 1-1/4", 1-1/2", 2", 2-1/2", 3"



imagination at work

Main Breaker THQMV-Ringless-200A 22K - 8/16 Circuits - N3R Encl Surface Front - UG/OH Incoming Feed – Feed-Thru Lugs – MEG Listed

CAT NO	DWG DATE	REV #
TSMR820CSFLFMG	6/4/2015	01

Revision	Date	Description

SHEET TITLE:
GE Main Panel

PROJECT DESCRIPTION:
5311 W. Congress
5311WestCongress.com

DRAWINGS PROVIDED BY:
Aztec Home Solutions
david@AztecHomeSolutions.com

DATE:
4/4/2025

SCALE:

SHEET:
10