

# 5311 West Congress

## PAGE TABLE

PAGE	DESCRIPTION	COMMENTS
1	OVERVIEW	FRONT PAGE
2	LAYOUT AND SETBACKS	FOR CITY PLANNING AND DELOPMENT
3	SUB-LOT DIVISION	SUB-LOT DIVISION
4	INCOMING POWER (SLEMCO)	CONDUIT PLACEMENT FOR SLEMCO
5	BUILDING POWER	POWER FROM PEDESTAL TO HOME, AC, SEWAGE
6	SEWAGE PLAN	
7	WATER PLAN	INCOMING WATER LINES FROM LWDS
8	EXCAVATION / DRIVEWAY	LAY GRAVEL DRIVEWAY FOR MAIN HOME.
9	POWER POLE	POWER PEDISTAL SPECIFICATIONS
10	GE MAIN PANEL	SPEC SHEET FOR PANEL
11	RELOCATE UTILITIES	
12	HOME TRIM OUT	TRIM OUT THE INTERIOR SEAM BETWEEN HALVES
13	FOUNDATION	FORM AND POUR FOUNDATION



3D Model <http://5311WestCongress.com>  
 Bid Form <http://bid.5311WestCongress.com>  
 This Document <http://pdf.5311WestCongress.com>

Revision	Date	Description
1	6/19/2024	Fliped Layout

SHEET TITLE:  
**Overview**

PROJECT DESCRIPTION:  
**5311 W. Congress**  
**5311WestCongress.com**

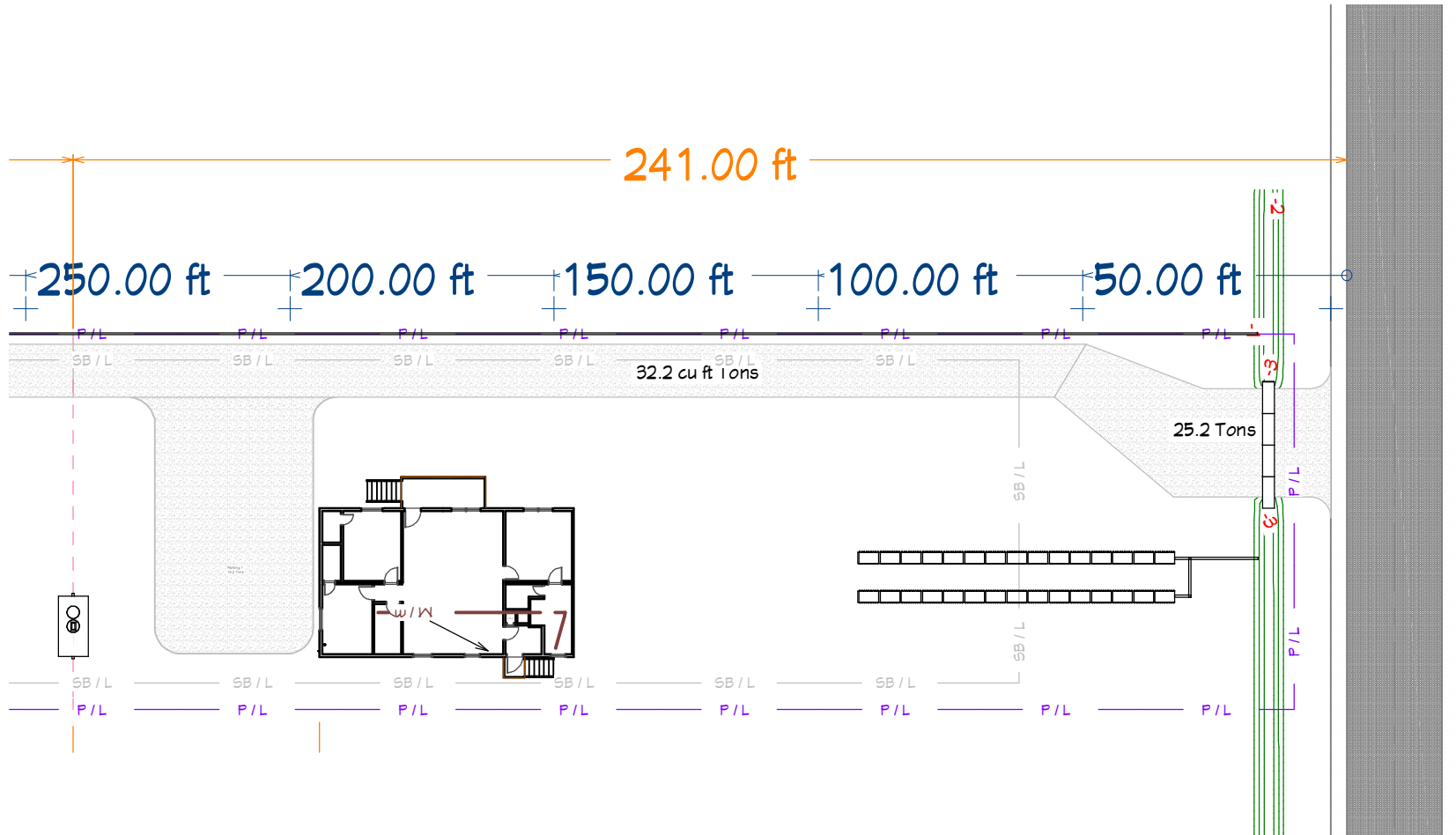
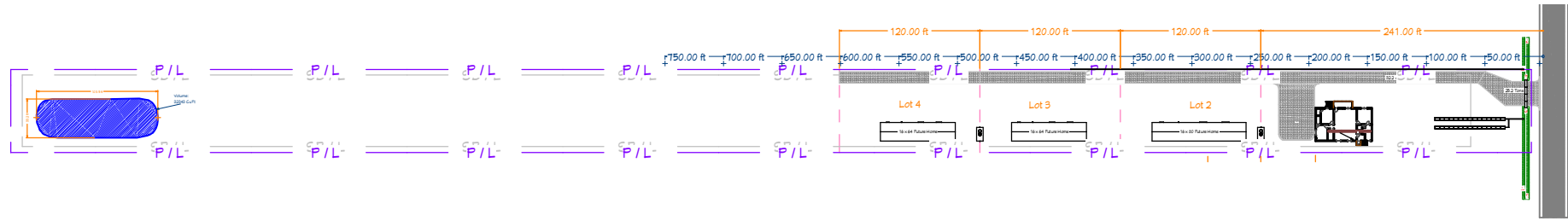
DRAWINGS PROVIDED BY:  
**Aztec Home Solutions**  
 david@AztecHomeSolutions.com

DATE:  
 4/5/2025

SCALE:

SHEET:  
**1**

# Layout and Setbacks



Revision	Date	Description
1	6/19/2024	Flipped Layout

SHEET TITLE:  
**Layout and Setbacks**

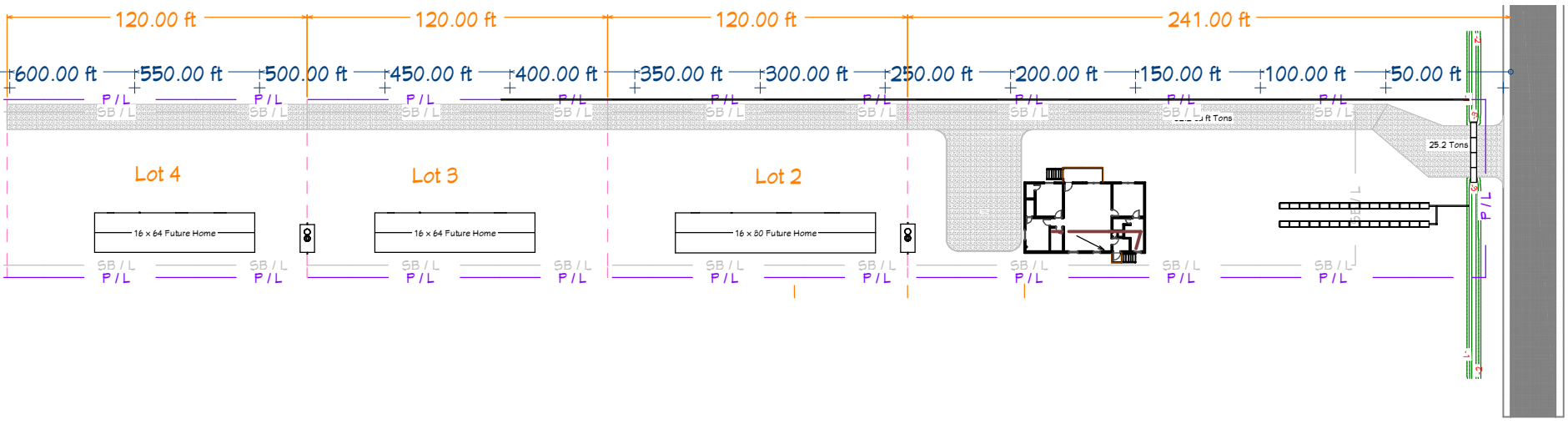
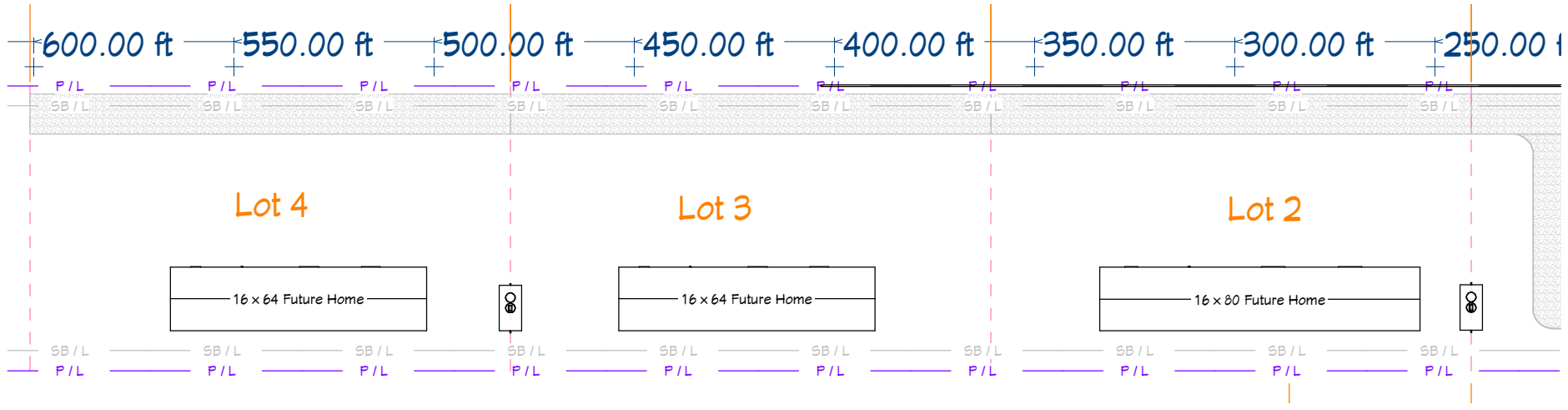
PROJECT DESCRIPTION:  
**5311 W. Congress  
5311WestCongress.com**

DRAWINGS PROVIDED BY:  
**Aztec Home Solutions  
david@AztecHomeSolutions.com**

DATE:  
4/5/2025

SCALE:

SHEET:



Revision	Date	Description
1	4/4/2025	

SHEET TITLE:  
Sub-Lot Division

PROJECT DESCRIPTION:  
5311 W. Congress  
5311WestCongress.com

DRAWINGS PROVIDED BY:  
Aztec Home Solutions  
david@AztecHomeSolutions.com

DATE:  
4/5/2025

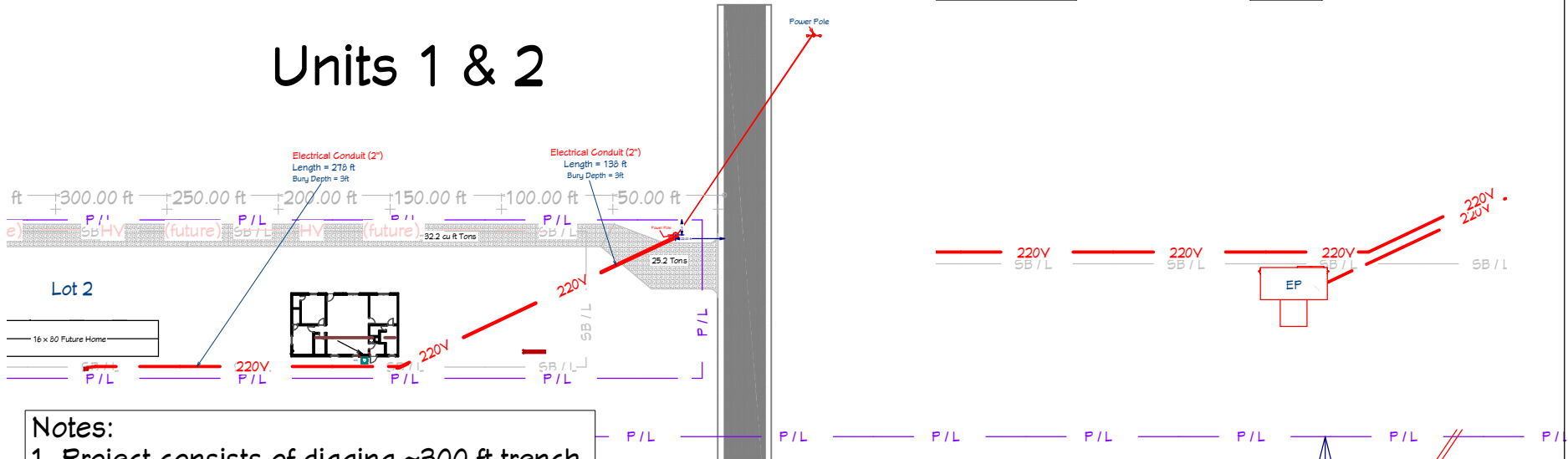
SCALE:

SHEET:

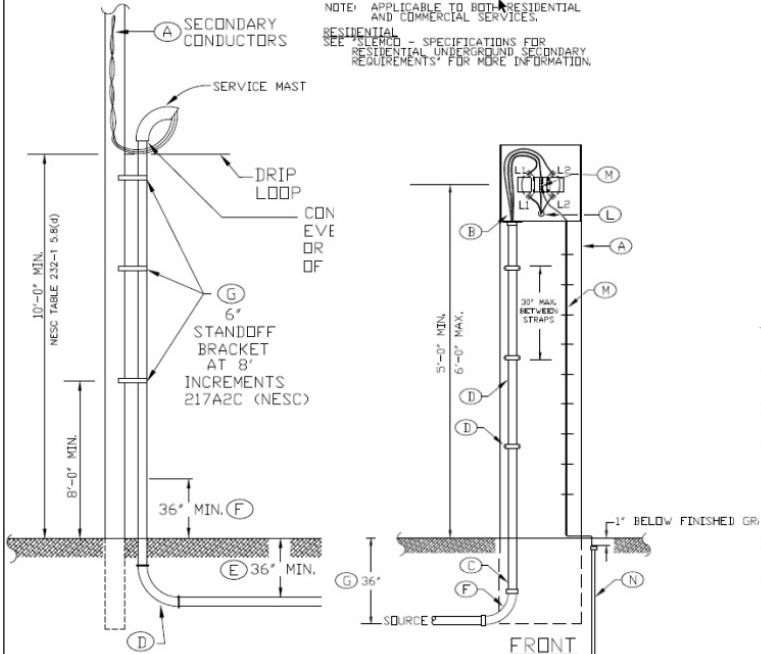
3

# Incoming Power (Slemco)

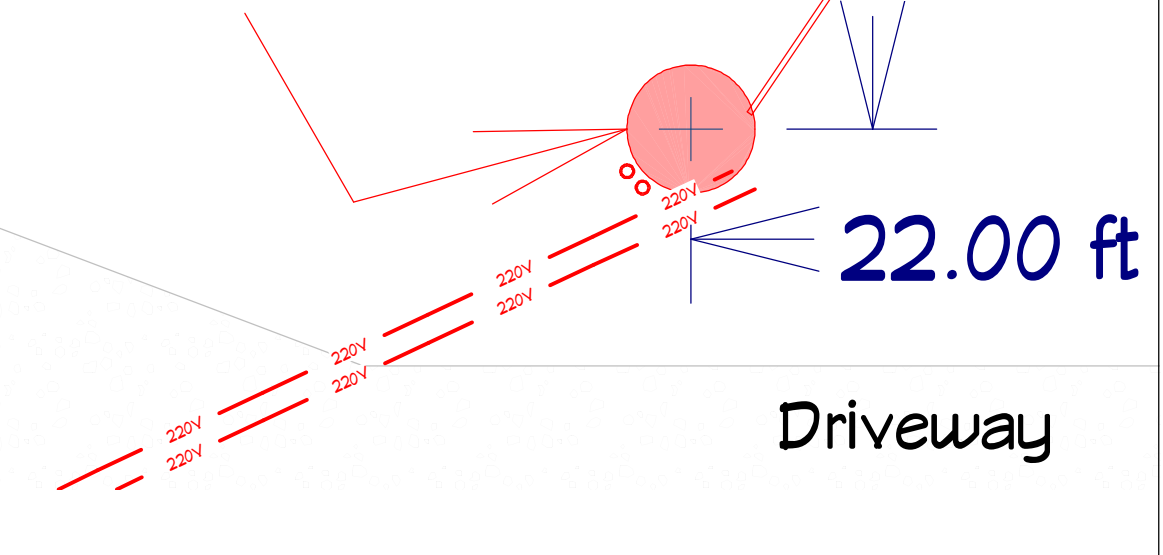
## Units 1 & 2



- Notes:**
1. Project consists of digging ~300 ft trench.
  2. Total Conduit: ~450'
  3. Bury 2 (138' & 285') 2" Conduit at 36".



**Power Pole**



REVISION TABLE	PROJECT DESCRIPTION:
Date: 6/19/2024	5311 W. Congress
Description: Flipped Layout	5311WestCongress.com
SHEET TITLE: Incoming Power (Slemco)	DRAWINGS PROVIDED BY: Aztec Home Solutions
	david@AztecHomeSolutions.com
	DATE: 4/5/2025
	SCALE:
	SHEET: 4

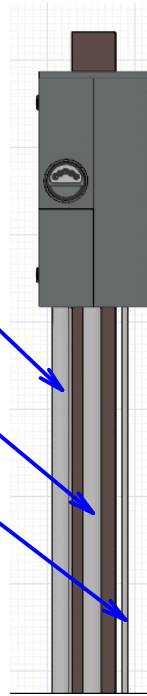
# Building Power



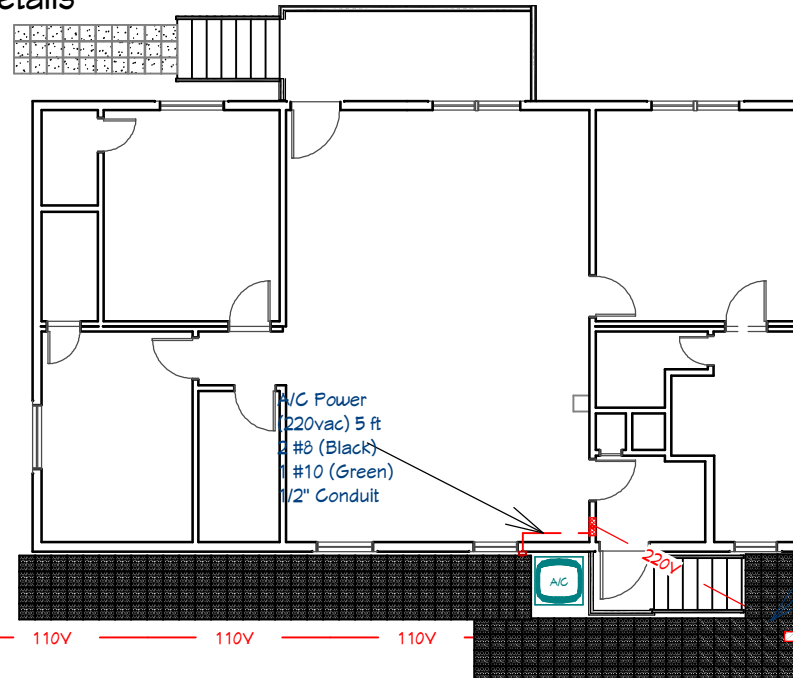
Incoming Power (220V)  
2" Conduit

Output to Home (220V)  
2" Conduit

Sewer Plant Power (110V)  
3/4" Conduit



See Pg 10-11  
for details



110v GFCI Receptacle  
(in WP Enclosure)

Sewer Plant Power  
(110vac 20A) 96 ft

2 #12 (1 Black, 1 White)  
1 #12 (Green)  
3/4" Conduit @ 18"

A/C Power  
(220vac) 5 ft  
2 #8 (Black)  
1 #10 (Green)  
1/2" Conduit

Main Power to Load Cent.  
(220vac 200A) 14 ft  
3 #3/0 (2 black, 1 White)  
1 #4 (Green)  
2" Conduit @ 24"

110V

110V

110V

110V

110V

110V

110V

110V

110V

110V

Revision	Description
6/19/2024	Flipped Layout
9/24/2024	Updated Power Prefestal

PROJECT TITLE:  
**Building Power**

PROJECT DESCRIPTION:  
**5311 W. Congress  
5311 WestCongress.com**

DRAWINGS PROVIDED BY:  
**Aztec Home Solutions  
david@aztechomesolutions.com**

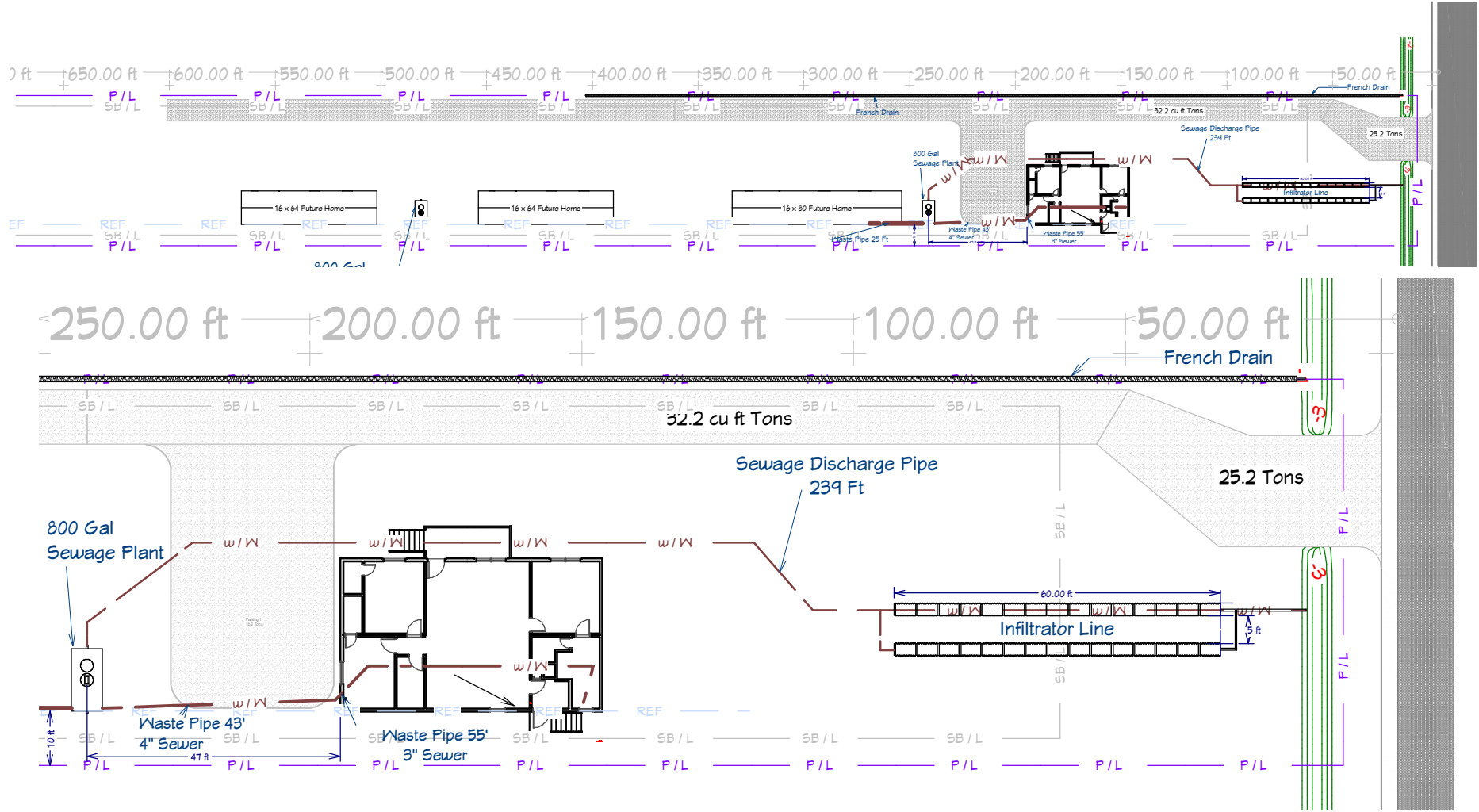
DATE:  
4/5/2025

SCALE:

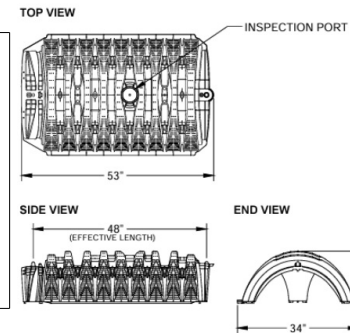
SHEET:  
**5**

1/L — P/L — P/L — P/L — P/L — P/L — P/L — P/L — P/L — P/L — P/L — P/L

# Sewage Plan



**Notes:**  
 The Waste Plant vender will bury the plant and install the discharge line.  
 Discharge Line will pass along the front of the home then split into 2 parallel 60' lengths between the home and the street. The output will then go to the drainage ditch along road.  
 Waste line will go from the sewer plant to the closest corner of the home, then turn up 90 degrees and transition from 4" to 3". The 20' closest to the home will be schedule 40 (as it will go under the parking area).



Revision	Table
6/19/2024	Flipped Layout
6/21/2024	Added French Drain
7/5/2024	Moved Infiltrator Line forward
7/15/2024	Moved Infiltrator to front

PROJECT DESCRIPTION:  
**5311 W. Congress**  
**5311 WestCongress.com**

SHEET TITLE:  
**Sewage Plan**

DRAWINGS PROVIDED BY:  
**Aztec Home Solutions**  
 david@aztehomesolutions.com

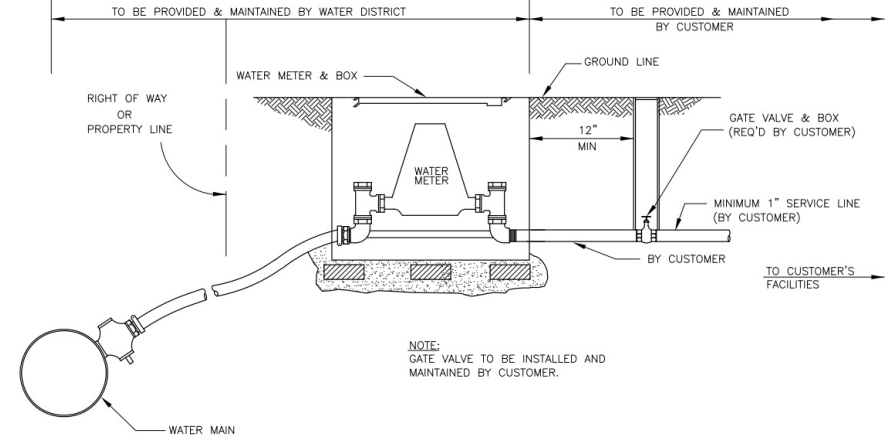
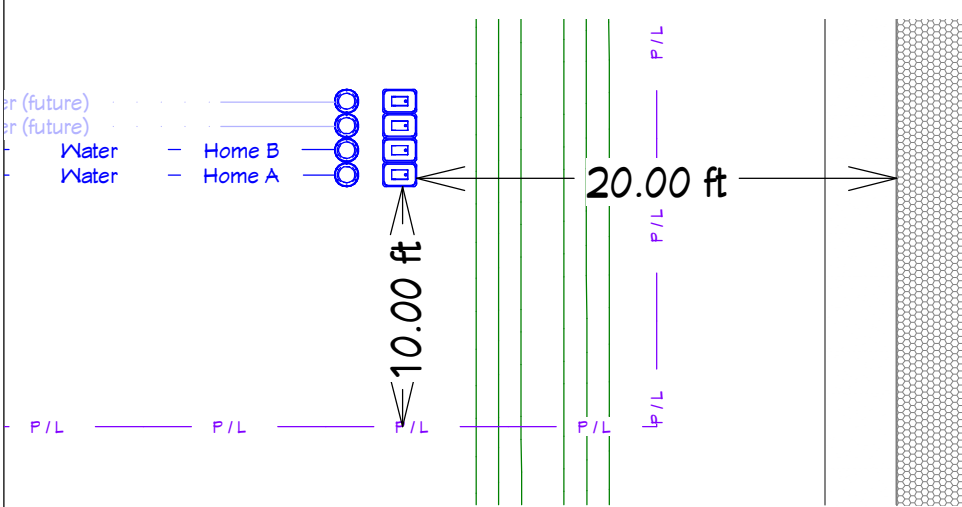
DATE:  
 4/5/2025

SCALE:

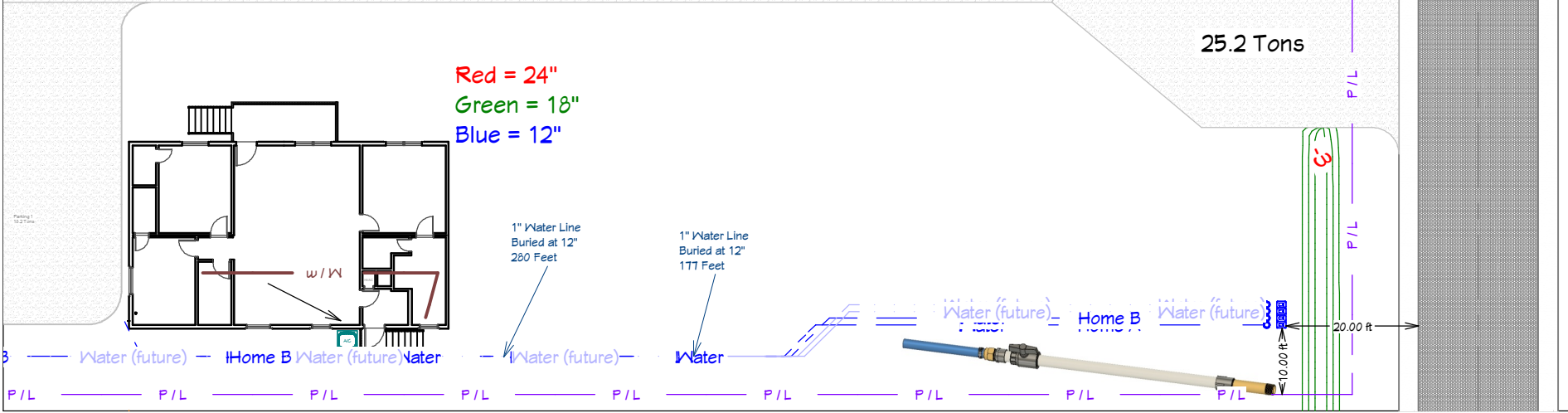
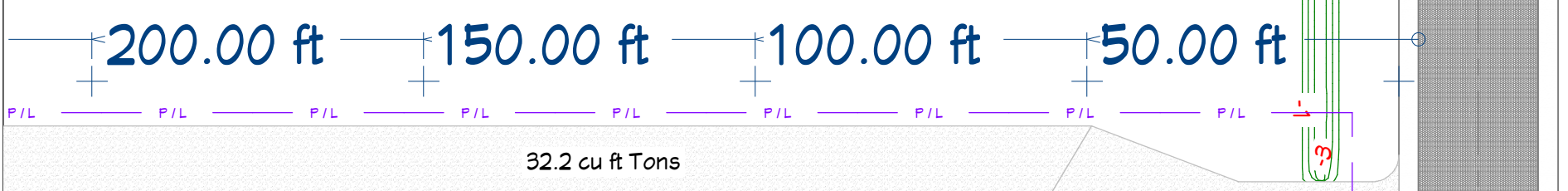
SHEET:  
**6**

# Water Plan

Notes:  
 1" PEX (of various colors for later identification).  
 Bury depth is 12".  
 The lines for homes 1 and 2 will be completed.  
 Lines 3 & 4 will be left coiled at surface (after home 2)



TYPICAL WATER SERVICE CONNECTION



Revision	Date	Description
1	6/19/2024	Flipped Layout
2	6/21/2024	Adj Meter placement

SHEET TITLE:  
**Water Plan**

PROJECT DESCRIPTION:  
 5311 W. Congress  
 5311 WestCongress.com

DRAWINGS PROVIDED BY:  
**Aztec Home Solutions**  
 david@AztecHomeSolutions.com

DATE:  
 4/5/2025

SCALE:

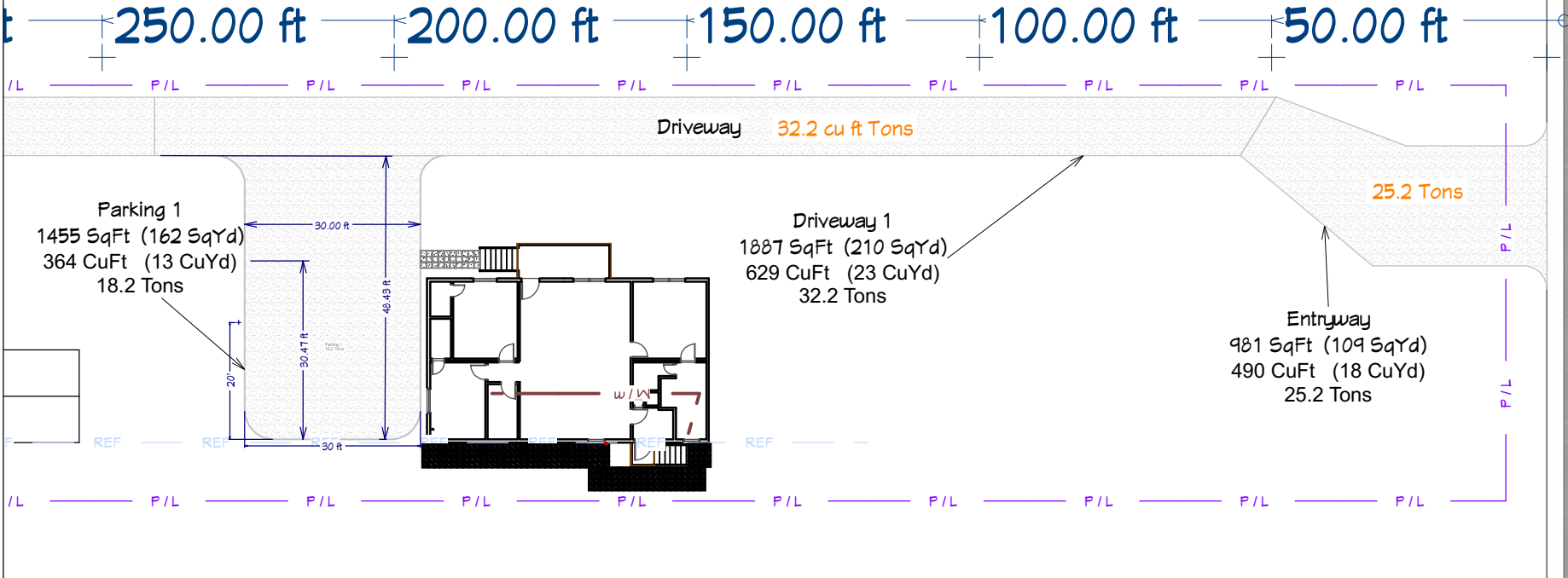
SHEET:  
**7**

# Excavation / Driveway

## Gravel Notes

Location	Depth	Tons	Comments
Entry	6in	25.2	Depth will be 8in over Culvert
Driveway 1	4in	32.2	
Parking 1	3in	15.4	
Driveway 2	4in	29.4	
Parking 2	3in	9.8	

Total = 107.8 Tons



Notes:  
Total Area is 3,200 StFt (rounded)

Revision	Date	Description
1	6/19/2024	Flipped Layout
2	9/5/2024	Updated Gravel Depths
3	10/17/2024	Widened Parking Entrance

SHEET TITLE:  
Excavation / Driveway

PROJECT DESCRIPTION:  
5311 W. Congress  
5311WestCongress.com

DRAWINGS PROVIDED BY:  
Aztec Home Solutions  
david@aztechomesolutions.com

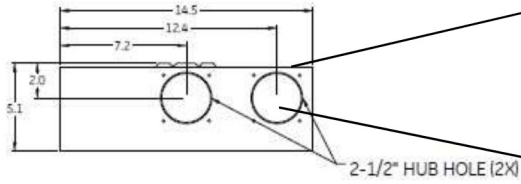
DATE:  
4/5/2025

SCALE:

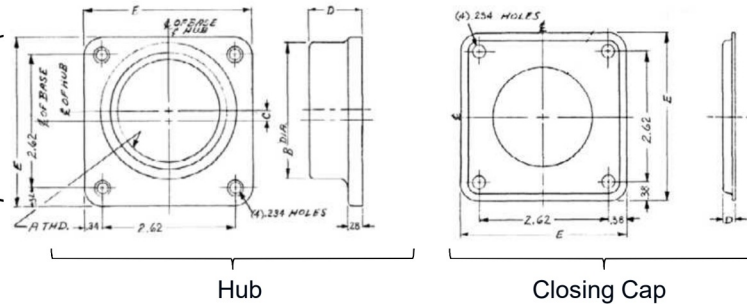
SHEET:  
8



**Top View**



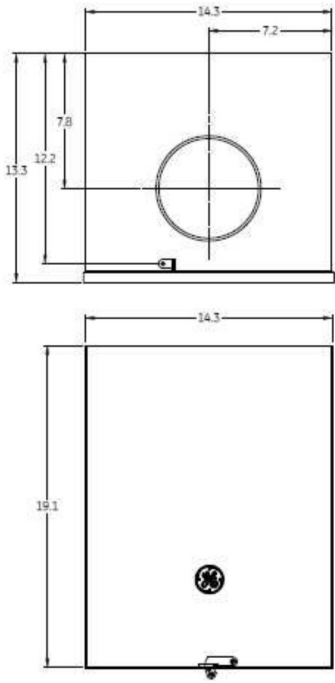
**Hub Dimensions**



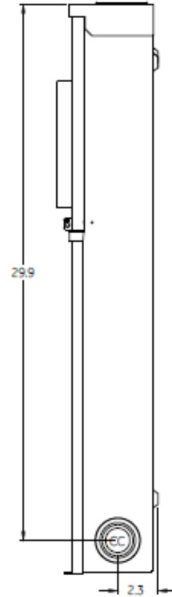
**Available Hubs**

Cat#	Mod#	A-THD	B-DIA	C	D	E
TC75	2	" $\frac{3}{4}$ - 14"	1.31	0.81	1.03	3.31
TC100	2	"1 - 11 $\frac{1}{2}$ "	1.53	0.69	1.03	3.31
TC125	2	"1 $\frac{1}{4}$ - 11 $\frac{1}{2}$ "	1.88	0.53	1.03	3.31
TC150	2	"1 $\frac{1}{2}$ - 11 $\frac{1}{2}$ "	2.12	0.42	1.03	3.31
TC200	2	"2 - 11 $\frac{1}{2}$ "	2.62	0.2	1.03	3.31
TC250	2	"2 $\frac{1}{2}$ - 8"	3.19	NONE	1.22	3.31
TCPP Closing Cap	1	NONE	NONE	NONE	0.25	3.38

**Front Separated View**

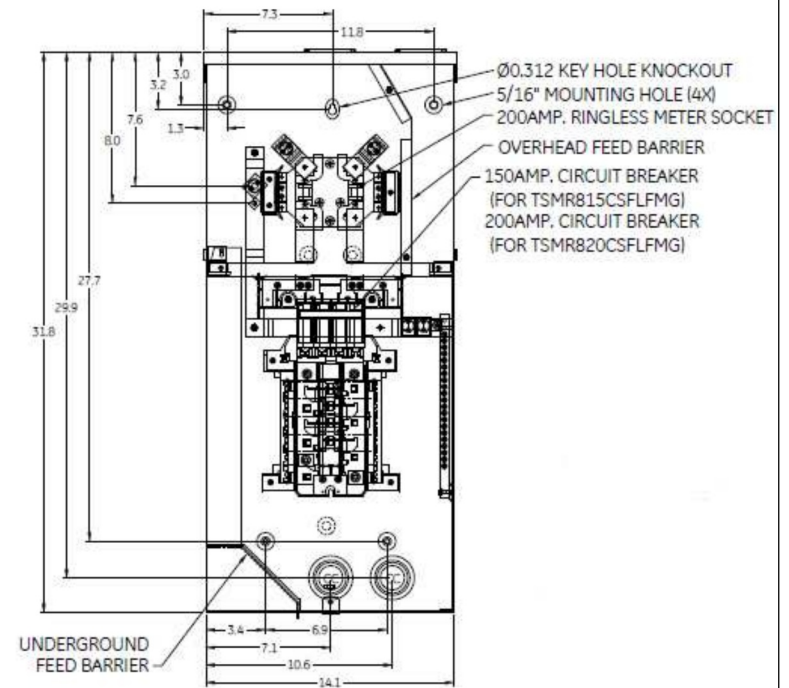


**Side View**

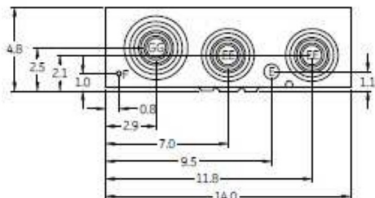


**Main Wire Size**  
(1) #6 – 4/0 CU/AL

**Inside View**



**Bottom View**



**Note : All Dimensions have  $\pm 0.125$  Tolerance**

**Knockouts**

F = 9/32"
E = 1/2"
CC = 1/2", 3/4", 1", 1-1/4", 1-1/2", 2"
EE = 1/2", 3/4", 1", 1-1/4", 1-1/2", 2", 2-1/2"
GG = 1-1/4", 1-1/2", 2", 2-1/2", 3"



imagination at work

Main Breaker THQMV-Ringless-200A 22K - 8/16 Circuits - N3R Encl Surface Front - UG/OH Incoming Feed – Feed-Thru Lugs – MEG Listed

CAT NO	DWG DATE	REV #
TSMR820CSFLFMG	6/4/2015	01

Revision	Date	Description

SHEET TITLE:  
GE Main Panel

PROJECT DESCRIPTION:  
5311 W. Congress  
5311WestCongress.com

DRAWINGS PROVIDED BY:  
Aztec Home Solutions  
david@AztecHomeSolutions.com

DATE:  
4/5/2025

SCALE:

SHEET:

10